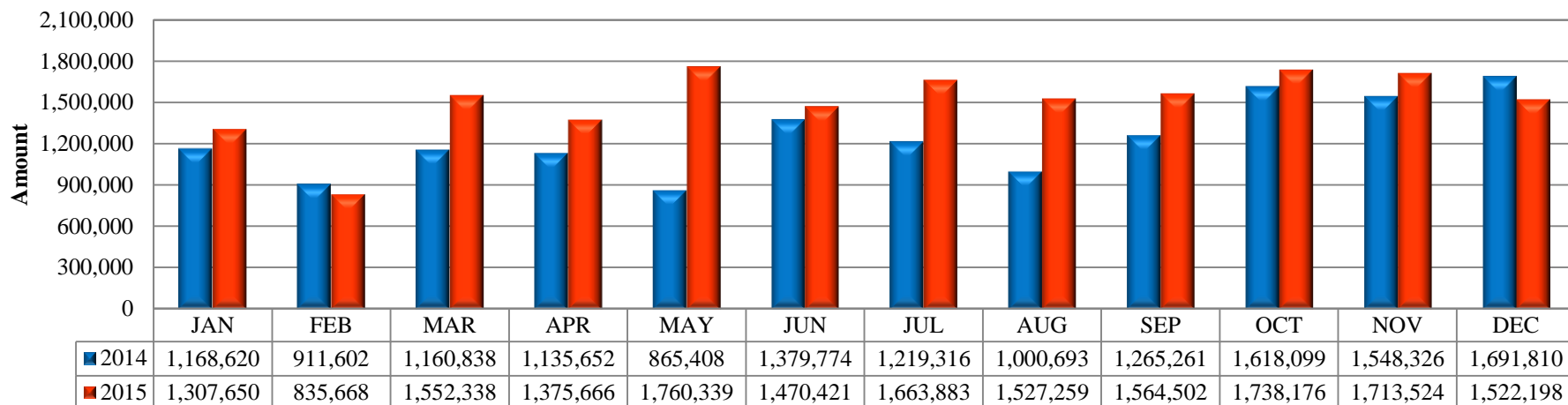


🍎 Monthly Consolidated Operating Revenue

Expressed in thousands of New Taiwan dollars

Monthly Consolidated Operating Revenue Chart



Year-to-Date Consolidated Operating Revenue Table

Period	2014	2015	YoY Change(%)	Period	2014	2015	YoY Change(%)
JAN~JAN	1,168,620	1,307,650	11.90 %	JAN~JUL	7,841,210	9,965,965	27.10%
JAN~FEB	2,080,222	2,143,318	3.03 %	JAN~AUG	8,841,903	11,493,224	29.99%
JAN~MAR	3,241,060	3,695,656	14.03 %	JAN~SEP	10,107,164	13,057,726	29.19%
JAN~APR	4,376,712	5,071,322	15.87 %	JAN~OCT	11,725,263	14,795,902	26.19%
JAN~MAY	5,242,120	6,831,661	30.32%	JAN~NOV	13,273,589	16,509,426	24.38%
JAN~JUN	6,621,894	8,302,082	25.37%	JAN~DEC	14,965,399	18,031,624	20.49%